



Sheffield
Bus Partnership

NORTH SHEFFIELD NETWORK MAP AND CONSULTATION GUIDE

Consultation
6 July to
31 July 2015

travelsouthyorkshire.com/sbp

WORKING TOGETHER TO IMPROVE YOUR BUS TRAVEL

We have developed the proposed new North Sheffield bus network shown on this map to improve the co-ordination of Sheffield's bus services. We are inviting you to tell us what you think about the network from 6 July to 31 July 2015 in our public consultation. Your views are important and will be used to help us make sure the network offers the best travel options for the people in the city before it is introduced at the end of October 2015.

Please read our South Sheffield bus network map to view the proposed changes in South Sheffield.

You can also view the map online at [**travelsouthyorkshire.com/sbp**](http://travelsouthyorkshire.com/sbp)

TAKE PART IN OUR CONSULTATION

Tell us what you think about the proposed new bus network:

- complete our short questionnaire online at **travelsouthyorkshire.com/sbp**
- pick up a paper copy of the questionnaire from an Interchange Customer Service Desk
- visit one of our consultation drop-in sessions

Paper copies of our questionnaire are available from the Customer Service Desks at Sheffield, Meadowhall, Arundel Gate, Hillsborough, Dinnington and Rotherham Interchange. They can be returned to a Customer Service Desk or Drop-Box, or by post to: **Sheffield Bus Partnership, 11 Broad Street West, Sheffield, S1 2BQ**. If you are posting your questionnaire please return it by Wednesday 29 July 2015.

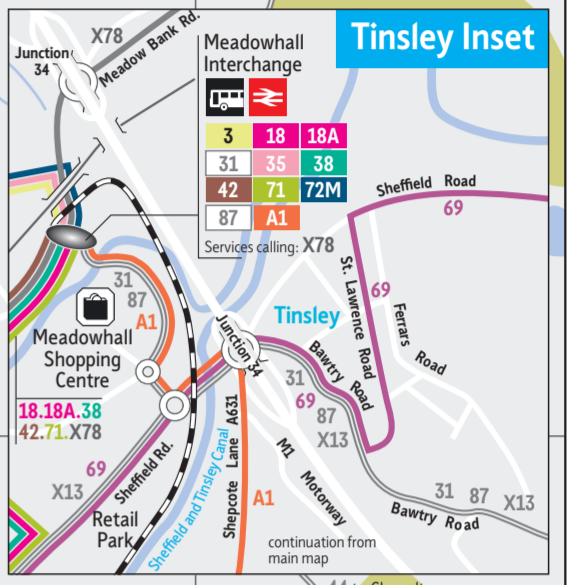
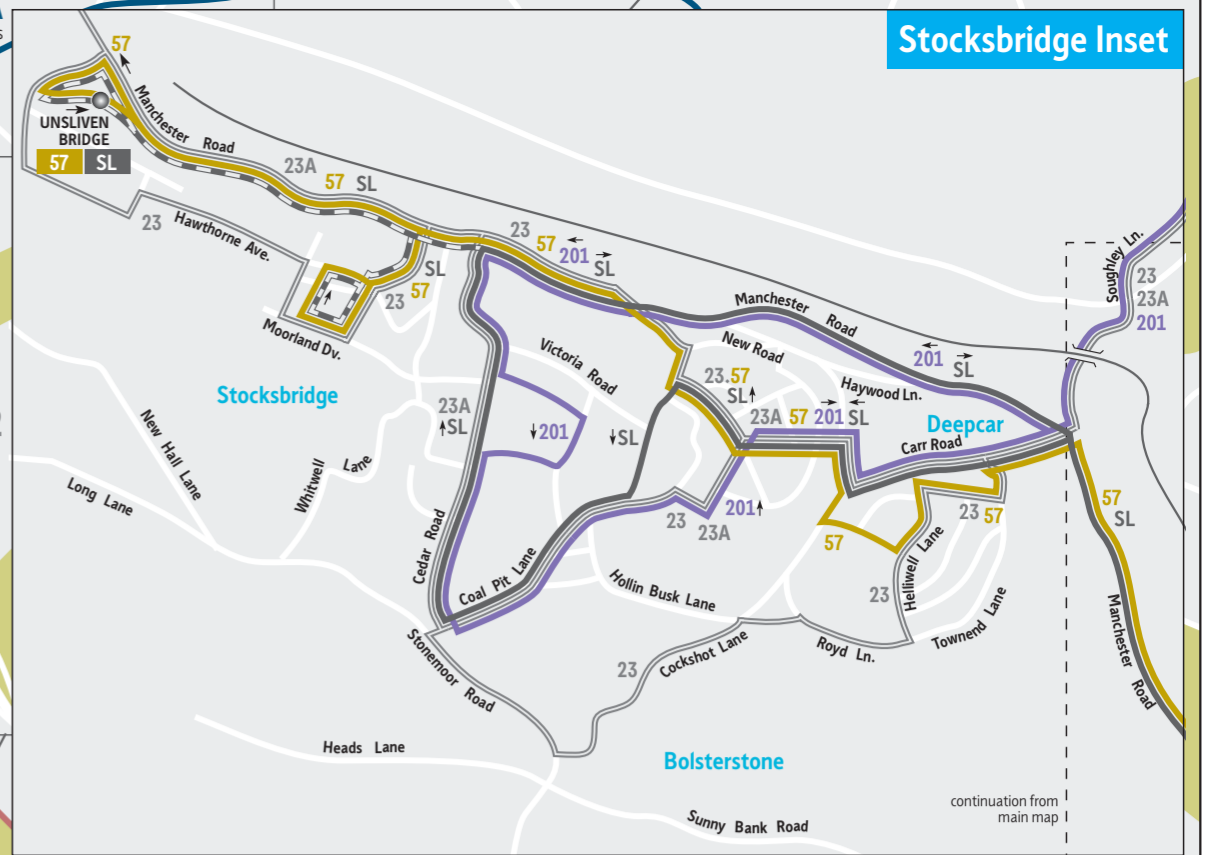
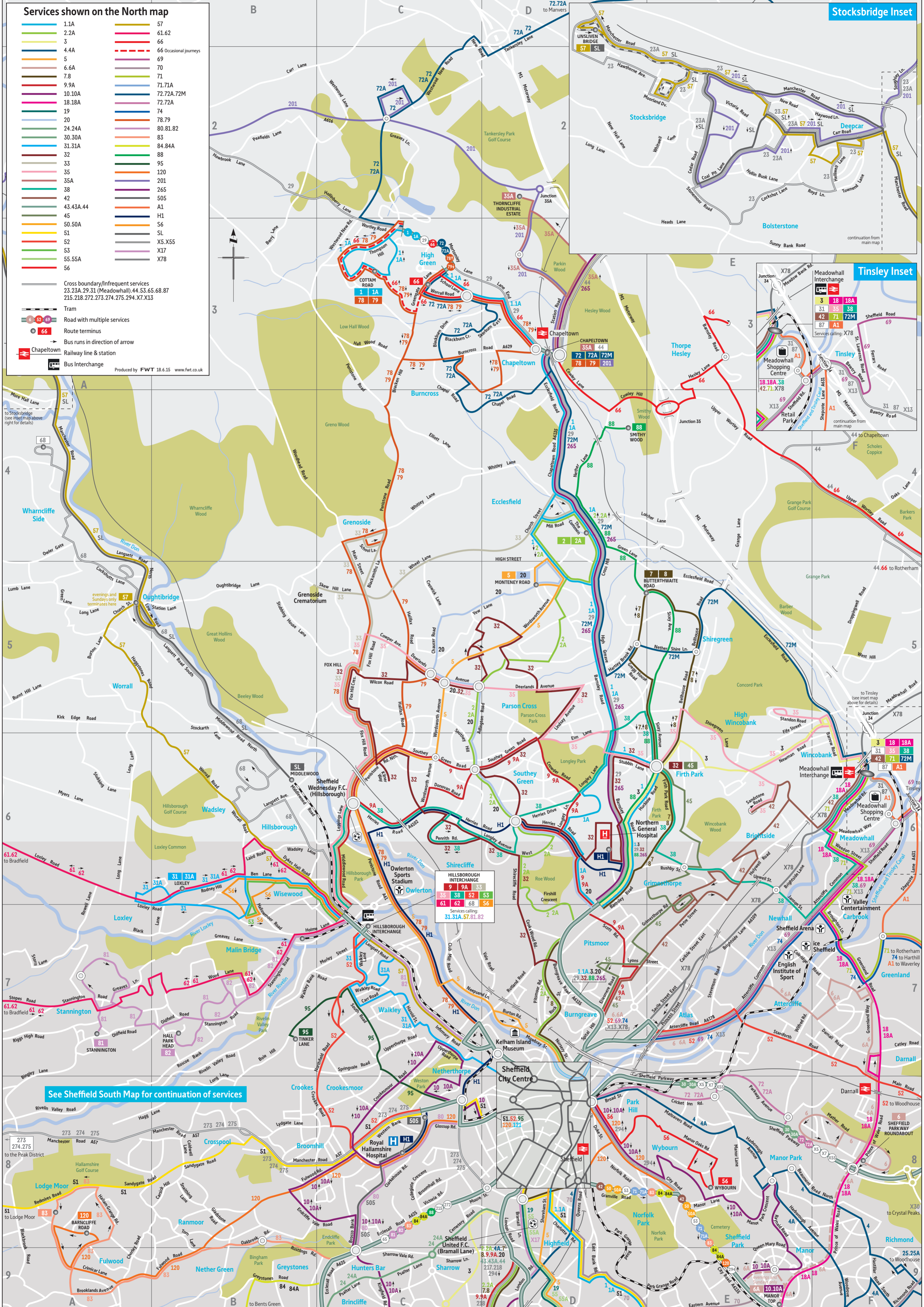
For further information about our consultation or for information in a different format please call **01709 51 51 51** or email **sheffieldbuspartnership@sypte.co.uk**

Services shown on the North map

- | | |
|-----------|------------------------|
| 1.1A | 57 |
| 2.2A | 61.62 |
| 3 | 66 |
| 4.4A | 66 Occasional Journeys |
| 5 | 69 |
| 6.6A | 70 |
| 7.8 | 71 |
| 9.9A | 71.71A |
| 10.10A | 72.72A.72M |
| 18.18A | 72.72A |
| 19 | 74 |
| 20 | 78.79 |
| 24.24A | 80.81.82 |
| 30.30A | 83 |
| 31.31A | 84.84A |
| 32 | 88 |
| 33 | 95 |
| 35 | 120 |
| 35A | 201 |
| 38 | 265 |
| 42 | 505 |
| 43.43A.44 | A1 |
| 45 | H1 |
| 50.50A | S6 |
| 51 | SL |
| 52 | X5.X55 |
| 53 | X17 |
| 55.55A | X78 |
| 56 | |

- Cross boundary/Infrequent services
23.23A.29.31 (Meadowhall).44.53.65.68.87
215.218.272.273.274.275.294.X7.X13
- Tram
- Road with multiple services
- Route terminus
- Bus runs in direction of arrow
- Chapeltown
- Railway line & station
- Bus Interchange

Produced by FWT 18.6.15 www.fwt.co.uk



HILLSBOROUGH INTERCHANGE

9	31	31A	33
35	38	62	63
61	62	68	56

Services calling:
31.31A.57.81.82

See Sheffield South Map for continuation of services

Current Service	Proposed Service	Route – areas served	PROPOSED FREQUENCY (MINUTES)			Consultation notes
			Monday-Friday daytime	Saturday daytime	Evening/Sunday	
—	1/1A	(1) High Green - Chapeltown - Ecclesfield village - Firth Park - Burngreave - Sheffield - Newfield Green - Hemsworth - Norton - Jordanthorpe/Batemoor (1A) High Green - Ecclesfield Common - Sheffield Lane Top - Northern General - Burngreave - Sheffield - Newfield Green - Hemsworth - Herdings	6 combined	7/8 combined	15 combined	New route replacing 48, 75, 79/79A and 87
—	2/2A	Ecclesfield - Parson Cross - Southey Green - Firshill - Pitsmoor - Sheffield - Abbeydale - (2) Millhouses/ (2A) Greenhill - Low Edges	10 combined	10 combined	15/30 combined	New route replacing 83, 87 and 97/98
2	32	See route details for service 32	—	—	—	Service replaced by Service 32
—	3	Nether Edge - Sheffield - Burngreave - Northern General - Firth Park - Wincobank - Meadowhall	10	12	20/30	New route replacing 22 and 76
—	4/4A	(4) Low Edges - Meadowhead - Heeley - Queens Road - Sheffield - Manor Park - Stradbroke - Woodhouse (4A) Bradway - Low Edges - Meadowhead - Heeley - Lowfields - Sheffield - Manor Park - Woodthorpe - Woodhouse (Spa Lane)	6 combined	7/8 combined	15 combined	New route replacing 22, 25/25A and 53
4/4A	24/24A	See route details for service 24/24A	—	—	—	Services 4/4A are renumbered 24/24A
—	5	Herdings - Newfield Green - Heeley Green - Sheffield - Neepsend - Owlerton - Parson Cross - Ecclesfield	10	15	30	New route replacing 47 and 53
5	45	See route details for service 45	—	—	—	New route 45 replacing 5
6	6	Sheffield - Attercliffe - Darnall - Littledale	30	30	see service 6A	Route unchanged
6	6A	Sheffield - Attercliffe - Darnall - Manor Top	see service 6	see service 6	60	Route unchanged
—	7/8	(7) Shiregreen (anticlockwise) - Firth Park - Firvale - Pitsmoor - Sheffield - Highfields - Woodseats - Meadowhead - Jordanthorpe/Batemoor (8) Shiregreen (clockwise) - Firth Park - Firvale - Pitsmoor - Sheffield - Highfields - Woodseats - Greenhill - Low Edges	6 combined	7/8 combined	15 combined	New route replacing 47/48, 75 and 76
—	9/9A	Totley Brook (9)/ Totley (9A) - Abbeydale - Highfields - Sheffield - Burngreave (Scott Road) - Northern General - Southey Green - (9A via Donovan Road) - Wadsley Bridge - Hillsborough	10 combined	10 combined	15/30 combined	New route replacing 20A, 97 and 98
10	10	Manor Top - Arbourthorne - Heeley Green - Nether Edge - Endcliffe - Broomhill - Hallamshire Hospital - Crookesmoor - Upperthorpe - Sheffield - Manor Park - Manor Top	60	60	no service	Revised route serving Endcliffe between Broomhill and Hunters Bar
10A	10A	Manor Top - Manor Park - Sheffield - Upperthorpe - Crookesmoor - Hallamshire Hospital - Broomhill - Endcliffe - Nether Edge - Heeley Green - Arbourthorne - Manor Top	60	60	no service	Revised route serving Endcliffe between Broomhill and Hunters Bar
15A	15A	Crystal Peaks - Eckington - Marsh Lane - Apperknowle - Coal Aston - Dronfield	no service	no service	120*	Route unchanged
—	18/18A	Woodseats (18) - Graves Park - Norton (18A from Jordanthorpe) - Gleadless - Manor Top - Darnall - Meadowhall	30 combined	30 combined	60**	New route replacing 20A and 38
19	19	Sheffield - Heeley Green - Norton Lees - Woodseats - Chancet Wood	60	60	no service	Route unchanged
—	20	Hemsworth - Norton Lees - Heeley - Lowfields - Sheffield - Burngreave - Northern General - Southey Green - Parson Cross - Ecclesfield	15	15	30	Revised route replacing 97/98 between City centre and Ecclesfield
20A	9A,18,20	See route details for 9A, 18, 20	—	—	—	Service replaced by 9A/18/20
22	3,4	See route details for 3, 4	—	—	—	Service replaced by 3, 4
23/23A	23/23A	Barnsley - Thurgoland - Deepcar - Stocksbridge - Langsett - Penistone	120	120	120	Route unchanged
—	24	Sheffield - Sharrow Head - Banner Cross - Bents Green - (Ringlow few journeys)	60	60	see service 24A	Current route 4 is renumbered 24
—	24A	Sheffield - Sharrow Head - Banner Cross - Millhouses	see service 24	see service 24	60	Current route 4A is renumbered 24A
25/25A	4/4A,M17	See route details for 4/4A, M17	—	—	—	Service replaced by 4/4A and M17
—	26	Crystal Peaks - Killamarsh - Woodall - Thorpe Salvin - Kiveton - Crystal Peaks	120	120	no service	Route unchanged
26A	26A	Crystal Peaks - Kiveton - Thorpe Salvin - Woodall - Killamarsh - Crystal Peaks	120	120	no service	Route unchanged
27	27	Rotherham - Aston - Beighton - Crystal Peak	20/40	60	no service	Route unchanged
29	29	Sheffield - Ecclesfield - Chapeltown - High Green - Wortley - Penistone	120	120	120	Route unchanged
30	30	Sheffield - Richmond Park - Handsworth - Woodhouse - Beighton - Crystal Peaks	30	30	see service 30A	Route unchanged
30A	30A	Sheffield - Richmond Park - Handsworth - Woodhouse - Beighton - Sothall - Crystal Peaks - Plumley	see service 30	see service 30	60	Route unchanged
31	31	Rotherham - Canklow - Brinsworth - Tinsley - Meadowhall	60	60	no service	Route unchanged
31/31A	31/31A	Sheffield - Upperthorpe - Walkley (31A via Langsett Crescent) - Hillsborough - Wisewood (31) - Loxley	60/60	60/60	60/no service	31A will run to Loxley via Rodney Hill
—	32	Sheffield - Burngreave - Shirecliffe - Foxhill - Parson Cross - Southey Green - Northern General - Firth Park	60	60	no service	New route replacing 2 and part of P1 and P2
—	33	Ecclesfield - Grenoside (crematorium) - Foxhill - Hillsborough	60	60	no service	New route partially replacing 36 and M92
35	35	Meadowhall - Wincobank - Firth Park - Parson Cross - Foxhill - Hillsborough	60	60	60	Revised route no longer serving Ecclesfield
35/36/37	35,42	See route details for service 35 and 42	—	—	—	Services partially replaced by 35 and 42
35A	35A	Chapeltown - Thorncliffe Industrial Estate	20	20	few	Route unchanged
38	38	Meadowhall - Attercliffe - Firth Park - Longley - Shirecliffe - Hillsborough	30	30	60	Revised route via Attercliffe Retail Park and terminating at Meadowhall
38	18/18A,38	See route details for service 18/18A and 38	—	—	—	Service replaced by service 18/18A and 38
—	42	Meadowhall - Brightside - Sheffield - Manor Top - Frecheville - Dyke Vale Road	30	30	60	Route extended to Meadowhall and no longer serve Crystal Peaks
43	43	Sheffield - Heeley - Woodseats - Meadowhead - Dronfield - Gosforth - Chesterfield	30	30	60	Route unchanged
43A	43A	Sheffield - Heeley - Woodseats - Meadowhead - Dronfield - Hallows	60	no service	no service	Route unchanged
44	44	Sheffield - Heeley - Woodseats - Meadowhead - Batemoor - Coal Aston - Dronfield - Chesterfield	60	60	60**	Route unchanged
44	44	Rotherham - Scholes - Thorpe Hesley - Wentworth - Harley - Chapeltown	3 journeys	3 journeys	no service	Route changed in Harley to serve Occupation Road
44	84/84A	See route details for service 84/84A	—	—	—	Route replaced by 84 and 84A

Current Service	Proposed Service	Route – areas served	PROPOSED FREQUENCY (MINUTES)			Consultation notes
			Monday-Friday daytime	Saturday daytime	Evening/Sunday	
—	45	Sheffield - Burngreave - Grimesthorpe - Wensley Estate - Firth Park	60	60	no service	Route 5 is renumbered 45 and will run Earldom Road at Pitsmoor
47/48	1/1A, 5, 7/8	See route details for services 1/1A, 5, 7/8	—	—	—	Services replaced by 1/1A, 5 and 7/8
50/50A	50/50A	Sheffield - Manor Top - Mosborough - Eckington - Whittington - Chesterfield	60/60	60/60	60	Route unchanged
51	51	Lodge Moor - Crosspool - Broomhill - University - Sheffield - Arbourthorne - Gleadless - Charnock	10	12	20/30	Revised route via East Bank Road instead of Eastern Avenue
52	52	Hillsborough - Crookes - Broomhill - University - Sheffield - Darnall - Handsworth - Woodhouse Station - Woodhouse	5 combined	6 combined	10/15 combined	Route unchanged
—	53	Hillsborough - Wisewood	10	12	20*	New route
53	4/4A, 5	See route details for services 4/4A, 5	—	—	—	Service replaced by services 4/4A and 5
—	53	Sheffield - Manor Top - Mosborough - Eckington - Clowne - Bolsover - Mansfield	120	120	120**	Route unchanged
—	55/55A	Sheffield - Heeley Green - Newfield Green - Gleadless - High Lane - (55) Mosborough - Plumbley - Westfield - Crystal Peaks (55A) Ridgeway - Marsh Lane - Eckington	30/60	30/60	no service	New route
56	56	Sheffield - Park Hill - Wybourn	12	20	30/60	Route unchanged
57	57	Sheffield - Hillsborough - Worrall - Oughtibridge - Deepcar - Stocksbridge	30	30	60**	Route unchanged
61	61	Hillsborough - Wadsley - Loxley - High Bradfield - Low Bradfield - Dungworth - Stannington - Hillsborough	60	60	120	Route change to serve Rydalhurst Avenue
62	62	Hillsborough - Stannington - Dungworth - Low Bradfield - High Bradfield - Loxley - Wadsley - Hillsborough	60	60	120	Route change to serve Rydalhurst Avenue
65	65	Sheffield - Ecclesall - Fox House - Tideswell - Buxton	120	120	3 journeys*	Route unchanged
66	66	Rotherham - Thorpe Hesley - Chapelton - High Green (peak only)	30	30	60	Route unchanged
—	68	Hillsborough - Wadsley - Wadsley Park - Middlewood - Oughtibridge - Wharnciffe Side	60/120	60/120	no service	Route 268 is renumbered 68
69	69	Sheffield - Attercliffe - Carbrook - Tinsley - Templeborough - Rotherham	20	30	60	Route unchanged
70	70	Sheffield - Arbourthorne - Manor Top - Richmond - Catcliffe	30	30	60**	Revised route via Eastern Avenue instead of East Bank Road
70/70A	70/70A	Norwood (70A) - Killamarsh - Halfway - Eckington - Staveley - Chesterfield	60	60	60**	Route unchanged
71	71	Rotherham - Canklow - Brinsworth - Tinsley Park - Meadowhall	30	30	60	Route unchanged
71/71A	71/71A	Sheffield - Manor Top - Mosborough - Killamarsh - Spinkhill - Mastin Moor - Staveley - Chesterfield	60	60	60**	Route unchanged
72/72A	72/72A	Sheffield - Parkway Markets - Handsworth - Waverley - (Treeton 72A) - Brinsworth - Rotherham	30	30	60 (72A)	Route unchanged
72/72A/72M	72/72A/72M	Meadowhall - Shiregreen (72M) - Chapelton - Burncross - High Green - Wentworth Industrial Park (72A) - Hoyland - Wath - Manvers	60	60	no service	Route unchanged
73/74	73/74	Crystal Peaks - Killamarsh - Renishaw - Barlborough - Clowne	120 combined	120 combined	no service	Route unchanged
74	74	Sheffield - Attercliffe - Sheffield Business Park - Waverley - Treeton - Swallownest - Todwick - Harthill (then as 29 to Rotherham)	60	60	60*	Route unchanged
75	1,7	See route details for services 1,7	—	—	—	Service replaced by 1 and 7
76	3,8	See route details for services 3,8	—	—	—	Service replaced by 3 and 8
—	78	Sheffield - Owlerton - Foxhill - Burncross - Chapelton - High Green - Grenoside - Foxhill - Owlerton - Sheffield	30	30	60	New route replacing current 79, 79A and 85
—	79	Sheffield - Owlerton - Foxhill - Grenoside - High Green - Chapelton - Burncross - Foxhill - Owlerton - Sheffield	30	30	60	New route replacing current 79, 79A and 86
79/79A	1,78,79	See route details for services 1,78,79	—	—	—	Service replaced by 78 and 79
—	80	Sheffield - Brocco Bank - Ecclesall - Abbeydale (Tesco P&R)	30	30	no service	New route partially replacing 70 and 85
81/SL2	81	Stannington - Malin Bridge - Hillsborough - Sheffield - Hunters Bar - Ecclesall - Dore	10**/20	10**/20	60	Revised route partially replacing 70 and SL2
82	82	Hall Park Head - Malin Bridge - Hillsborough - Sheffield - Hunters Bar - Ecclesall	20	20	30**/60	Route revised in Stannington
83A/123	83	Fulwood - Nether Green - Hunters Bar - Sheffield - Manor Top - Normanton Hill - Woodhouse - Beighton - Crystal Peaks	20	20	60**	Route revised replacing current 83A and 123
83/83A	2/2A, 83	See route details for services 2/2A, 83	—	—	—	Service replaced by 2/2A and 83
—	84/84A	Bents Green - High Storr - Hunters Bar - Sheffield - Manor Top - Basegreen - Birley - Hackenthorpe (84) / Owlthorpe (84A) - Crystal Peaks	20/40	20/40	60**	Route revised replacing current 44/44A and 84
84	31/31A, 53, 84/84A	See route details for services 31/31A, 53, 84/84A	—	—	—	Service replaced by 31/31A and 84/84A
85/85A	78, 79, 80	See route details for services 78, 79, 80	—	—	—	Service replaced by 78, 79 and 80
87	87	Meadowhall - Tinsley - Brinsworth - Whiston - Wickersley - Maltby	60	60	no service	Route unchanged
87	1A, 2A	See route details for services 1A and 2A	—	—	—	Service replaced by 1A and 2A
88	88	Bents Green - Banner Cross - Hunters Bar - Sheffield - Burngreave - Firth Park - Shiregreen - Ecclesfield - (Smithy Wood)	10	10	30	Route unchanged
95	95	Sheffield - Commonsides - Walkley	10	12	15/20	Route unchanged
97/98	2/2A, 9/9A, 20	See route details for services 2/2A, 9/9A, 20	—	—	—	Service replaced by 2/2A, 9/9A and 20
120	120	Fulwood - Ranmoor - Broomhill - Hallamshire Hospital - Sheffield - Manor Top - Frecheville - Hackenthorpe - Crystal Peaks - Westfield - Halfway	5 combined	6 combined	10/15 combined	Journeys that currently terminate at Hallamshire hospital extended to Ranmoor
121	10/10A	See route details for services 10/10A	—	—	—	Service replaced by 10/10A

Current Service	Proposed Service	Route – areas served	PROPOSED FREQUENCY (MINUTES)			Consultation notes
			Monday-Friday daytime	Saturday daytime	Evening/Sunday	
123	83	See route details for service 83	—	—	—	Service replaced by 83
201	201	Stocksbridge - Deepcar - Thorncliffe - Chapelton	60	60	no service	Route unchanged
215	215	Sheffield - Ecclesall - Fox House - Grindleford - Calver - Bakewell	1 journey	1 journey	4 journeys	Route unchanged
218	218	Sheffield - Totley - Baslow - Bakewell OR Chatsworth - Bakewell	30 combined	30 combined	60* combined	Route unchanged
252	55/55A	See route details for services 55/55A	—	—	—	Service 252 replaced by new service 55/55A
265	265	Sheffield - Burngreave - Northern General - Chapelton - Birdwell - Barnsley	30	30	60	Route unchanged
268	68	See route details for service 68	—	—	—	Service 268 is renumbered service 68
272	272	Sheffield - Ecclesall - Foxhouse - Hathersage - Hope - Castleton	60	60	60/120	Route unchanged
273/274/275	273/274/275	Sheffield - Rivelin - Ladybower - Bamford - Castleton (Calver/Eyam, Bakewell 275)	5 journeys	4 journeys	6 journeys day	Route unchanged
294	294	Dronfield - Dronfield Woodhouse - Manor Top - Sheffield - Woodseats - Dronfield	few	no service	few	Route unchanged
505	505	Sheffield University - Broomhill - Banner Cross - Millhouses	12 journeys	no service	no service	Route unchanged
A1	A1	(Sheffield - Parkway Markets) - Waverley - Meadowhall - Rotherham	30**	30**	no service	Route unchanged
H1	H1	Northern General Hospital - Owlerton - Royal Hallamshire Hospital	30	no service	no service	Route unchanged
M17	M17	Dore - Totley Brook - Totley Rise - Bradway - Greenhill - Meadowhead	60	60	no service	Route revised to serve Longford Road at Bradway and no longer serves Jordanthorpe
M20	45	M20 withdrawn. See route details for service 45 at Pitsmoor	withdrawn	withdrawn	withdrawn	M20 withdrawn, 45 partially replaces
M92	33,34	See route details for service 33,44	withdrawn	withdrawn	withdrawn	Service withdrawn and partially replaced by services 33 and 44
P1/P2	32	See route details for service 32	withdrawn	withdrawn	withdrawn	Service partially replaced by service 32
S6	S6	Hillsborough - Wisewood circle	20	20	no service	Route unchanged
SL	SL	Middlewood - Oughtibridge - Deepcar - Stocksbridge	10	10	20	Route unchanged
SL2	81	See route details for service 81	withdrawn	withdrawn	withdrawn	Service replaced by service 81
SL3	72	See route details for service 72	—	—	—	Service replaced by service 72
SL3	72	Killamarsh - Sothall - Crystal Peaks	20	20	no service	Route unchanged
X5/X55	X5/X55	Sheffield - Handsworth - Swallownest - Wales - Kiveton - Dinnington	20	30	60	Route unchanged
X7	X7	Sheffield - Whiston - Wickersley - Bramley - Maltby	4 journeys	no service	no service	Route unchanged
X13	X13	Sheffield - Catcliffe - Brinsworth - Wickersley - Woodlathes	2 journeys	no service	no service	Route unchanged
X17	X17	Sheffield - Woodseats - Meadowhead - Chesterfield - (Matlock)	30 (60 to Matlock)	30 (60 to Matlock)	60*	Route unchanged
X78	X78	Sheffield - Meadowhall - Rotherham - Conisbrough - Doncaster	10	10	20/30	Route unchanged

* No Sunday evening service ** Runs part route only

Note - the map contains the main services operating throughout Sheffield but for clarity excludes the following routes:- 34, 43 (Rotherham), 216 and school services

The Monday to Saturday frequency applies to 0730 and 1800 approx.

NETWORK CONSULTATION

Tell us what you think about Sheffield's proposed new bus network

- online at travelsouthyorkshire.com/sbp
- in a paper questionnaire from our Interchange customer service desks
- at one of our consultation drop-in sessions

VENUE	DATE	TIME
WOODSEATS LIBRARY Chesterfield Road, Sheffield S8 0SH	6 JULY	1600-1830
MEADOWHALL INTERCHANGE	8 JULY	1600-1830
BRADWAY COMMUNITY HALL Bradway Road, Sheffield S17 4QQ	10 JULY	1600-1900
CHAPELTOWN COMMUNITY CENTRE 318-324 Burncross Road, Sheffield S35 1RX	11 JULY	1215-1415
ECCLESFIELD LIBRARY 113 High Street, Ecclesfield, Sheffield S35 9UA	13 JULY	1600-1830
FOXHILL INVOLVE COMMUNITY HUB 31-33 Wolfe Road, Foxhill, Sheffield S6 1BT	14 JULY	1600-1900
FIRTH PARK CENTRE FOR LIFE 8 Stubbin Lane, Firth Park, Sheffield S5 6QL	15 JULY	1600-1830
WOODHOUSE LIBRARY Tannery Street, Sheffield S13 7JU	16 JULY	1500-1730
SHEFFIELD INTERCHANGE	17 JULY	1600-1830
ARUNDEL GATE INTERCHANGE	18 JULY	1400-1630
CRYSTAL PEAKS LIBRARY 1-3 Peak Square, Crystal Peaks Complex, Waterthorpe, Sheffield S20 7PH	20 JULY	1500-1730
HILLSBOROUGH INTERCHANGE	21 JULY	1600-1830
BENTS GREEN METHODIST CHURCH Ringinglow Road, Sheffield S11 7PU	22 JULY	1600-1900



Sheffield Bus Partnership

Sheffield Bus Partnership is made up of the organisations responsible for bus travel in Sheffield - First South Yorkshire, Stagecoach in Sheffield, Sheffield Community Transport, Sheffield City Council and South Yorkshire Passenger Transport Executive. We are working together to improve your bus services and provide a network that meets the needs of the people living in, working in and visiting the city.



travelsouthyorkshire.com/sbp



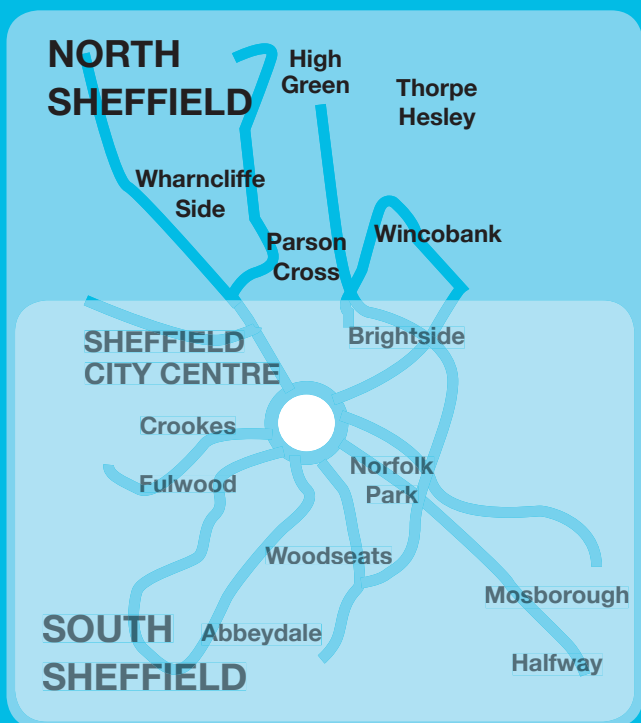
sheffieldbuspartnership@sypte.co.uk



Traveline 01709 51 51 51

NORTH SHEFFIELD MAP AND CONSULTATION GUIDE

South Sheffield map and consultation guide also available.



travelsouthyorkshire.com/sbp